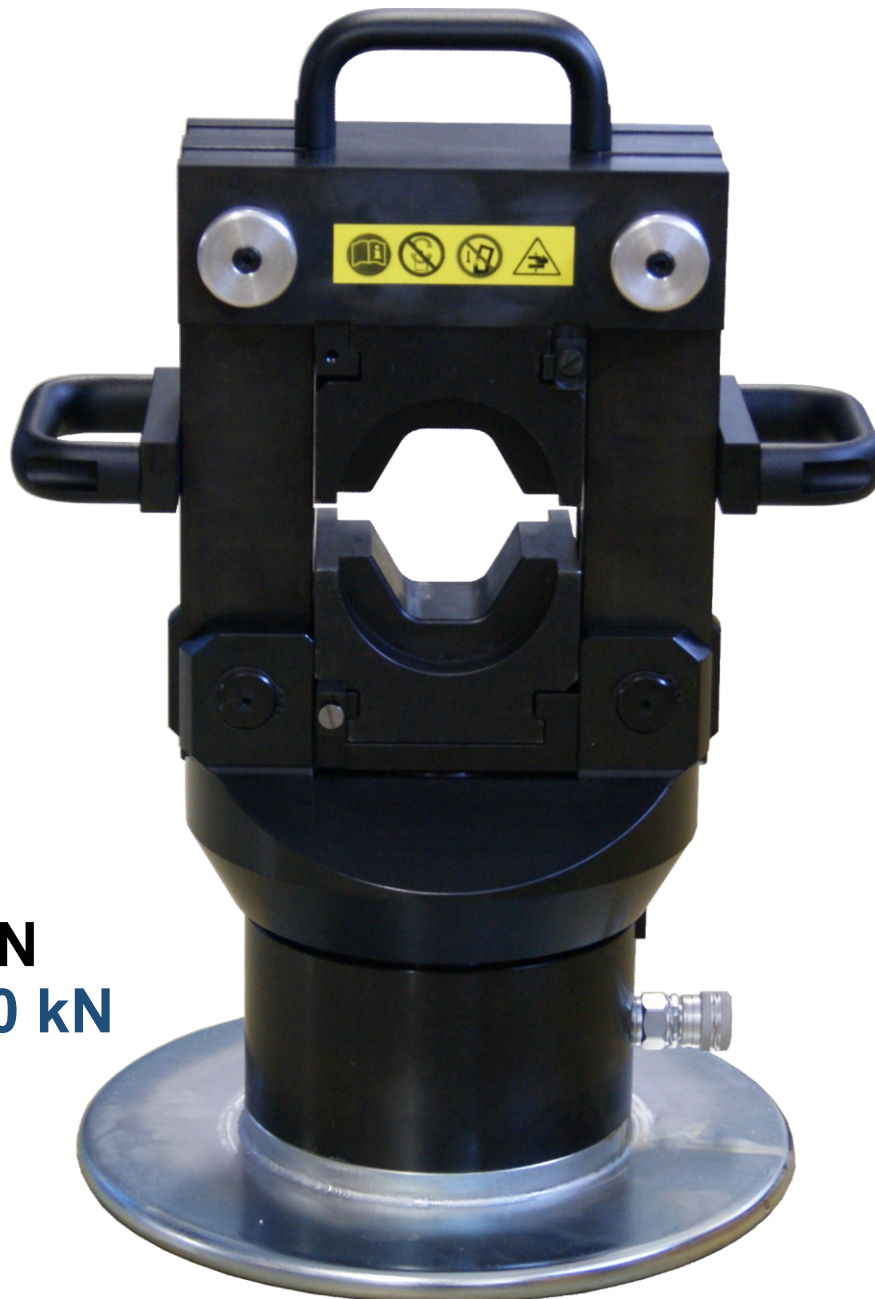


Pressköpfe für die Kabelmontage Crimping Heads for Cable Connections



1000 kN
1000 kN

Technische Änderungen bleiben vorbehalten. / We reserve the right to make technical changes.

P-1000

Hydraulischer Presskopf

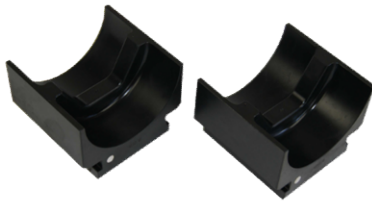
Hydraulic Crimping Head

Hydraulischen Presskopf

Hydraulic crimping head

- ☉ Stabile Konstruktion
- ☉ Zum Anschluss an eine Hydraulikpumpe für einfachwirkende Werkzeuge
- ☉ 825 kN bei 700 bar
1000 kN bei 850 bar
- ☉ Hub: 30 mm
- ☉ Einsätze Serie „1000“ (Größe VI)

- ☉ Solid design
- ☉ For the connection to a hydraulic pump for single acting tools
- ☉ 825 kN at 10.000 PSI
1000 kN at 12.142 PSI
- ☉ Stroke: 30 mm
- ☉ Dies series “1000” (size VI)



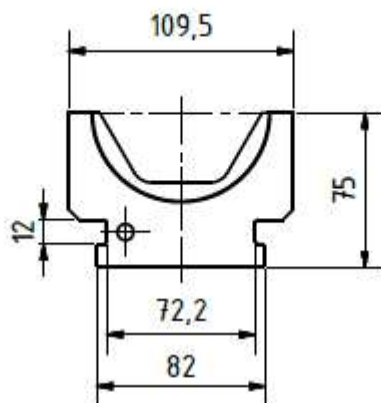
Presseinsätze / Crimping die



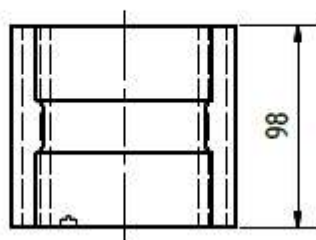
Typ Type	Presskraft Press Power kN	Kupfer DIN Copper DIN mm ²	Aluminium Aluminum mm ²	Abmessung Dimension mm	Gewicht Weight kg
P-1000	825 kN @ 700 bar 1000 kN @ 850 bar	1600	1600	Ø310	63

P-1114

Presseinsätze Serie 1000 (Gr. VI)
Crimping die series 1000 (size VI)



Außenmaße: 109,5x98x75



Einsatz / Insert

Gewicht / Weight: ~9000 g

Typ Type			Hub Stroke mm	Abmessung Dimension mm	Gewicht Weight kg
P-1000			30	109,5x98x75 (2x)	9

P-1000
Presseinsätze Serie 1000 (Gr. VI)
Crimping dies series 1000 (size VI)


Typ Type	Kennzahl Size code	Pressbreite Crimping width	Kupfer DIN zugentlastet Copper DIN non-tension	Kupfer DIN zugfest Copper DIN full-tension	Aluminium zugentlastet Aluminum non-tension	Aluminium zugfest Aluminum full-tension	Aluminium-Hülse Aluminum sleeve	Stahl-Hülse Steel sleeve	Aldreyseil Aldrey cable
		mm	mm ²	mm ²	mm ²	mm ²	mm ²	mm ²	mm ²
PK17-1000-B25	17	25	---	---	---	---	---	41-50	---
PK19-1000-B25	19	25	---	---	---	---	---	51-56	---
PK21-1000-B25	21	25	---	---	---	---	---	57-75	---
PK23-1000-B25	23	25	---	---	---	---	---	76-92	---
PK52-1000-B25	52	25	800	---	---	---	---	---	---
PK52-1000-B60	52	60	---	---	625	---	570/40 560/50 550/70	---	---
PK58-1000-B25	58	25	1000	800	---	---	---	---	---
PK58-1000-B60	58	60	---	---	800	---	650/45 680/85	---	---
PK60-1000-B60	60	60	---	---	1000	---	---	---	---
PK62-1000-B25	62	25	1200	1000	---	---	---	---	---
PK62-1000-B60	62	60	---	---	1200	---	1045/45	---	---
PK64-1000-B60	64	60	---	---	---	---	1055/45	---	---
PK70-1000-B25	70	25	1400	1200	1400	---	---	---	---
PK72-1000-B25	72	25	---	1600	---	---	---	---	---
PK76-1000-B25	76	25	1600	---	1600	---	---	---	---
PK80-1000-B25	80	25	2000	---	2000	---	---	---	---
PK85-1000-B25	86	25	2500	---	2500	---	---	---	---

DIN 48083 endet mit Kennzahl 58. Fragen Sie Ihren Lieferanten für Verbinder, mit welcher Kennzahl sein Verbinder gepresst werden muss.

DIN 48083 ends with code number 58. Ask your connector supplier which code number must be used to press their connector.